

Connectors to Power Board

* J3 is connected to J4 (Input Driver B) or J6 (Input Driver A)

* J4 on Power Board

J4-2: P1.1 of MSP430 (Pin 3)

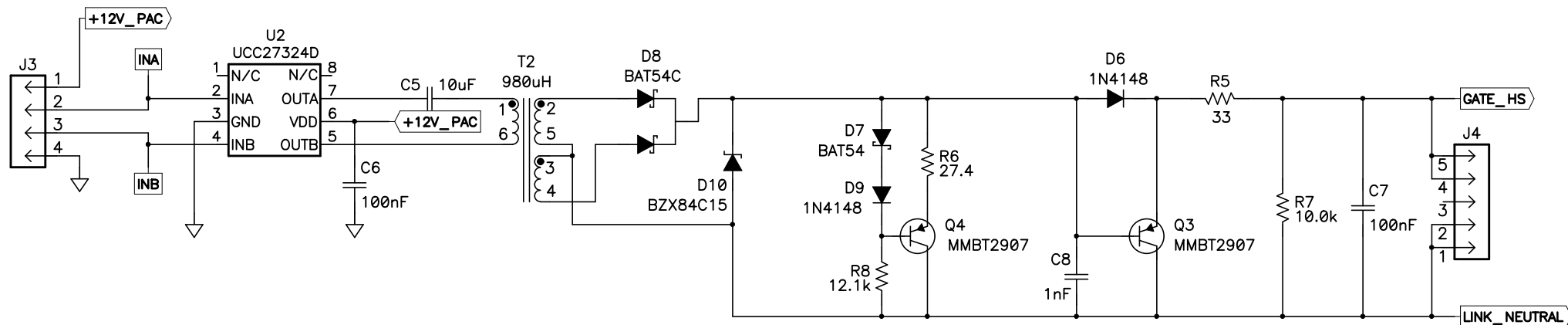
J4-3: P1.6 of MSP430 (Pin 8)

* J6 on Power Board

J6-2: P1.2 of MSP430 (Pin 4)

J6-3: P1.5 of MSP430 (Pin 7)

* J4 is connected to J5 (Gate high-side FET B) or J7 (Gate high-side FET A)



Notes

* Built on PCB "PMP5568 - 350W PSU - Gate Drive RevD.pcb"



Title 350W PSU - Gate Drive		
Size B	Number PMP5568	Rev D
Date 07/07/2011	Drawn by M. Marjanovic	
Filename PMP5568 - 350W PSU - Gate Drive RevD.sch	Sheet 1	of 1